

# WiBu Codemeter Licensing System



Using the Bosch tools (MM6x, XFlash, TK\_WinX and PMS/D) requires a valid license.

Therefore different kind of hardware dongles are available:



- USB (extern):



- USB (intern):



- PCMCIA card:



- ExpressCard:



- SD Karte:



- MicroSD card:



- CompactFlash card:



Please contact your Bosch responsible to get more detailed information about ordering of tool licenses !

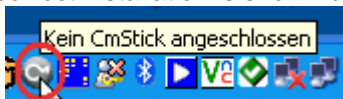
During the installation of MM6x, XFlash, TK\_WinX or PMS/D you will get the CodeMeter runtime software automatically installed.

After successfully installation the following icon is shown in the systembar (next to the system clock):



If it is BLUE, no valid license is found ! After connecting a valid dongle, the icon colour goes to green

>> the correct installation is shown by the "codemeter" icon in the system menu:



>> plug on your License Dongle:



**The following messages concerning the licensing system can be shown :**

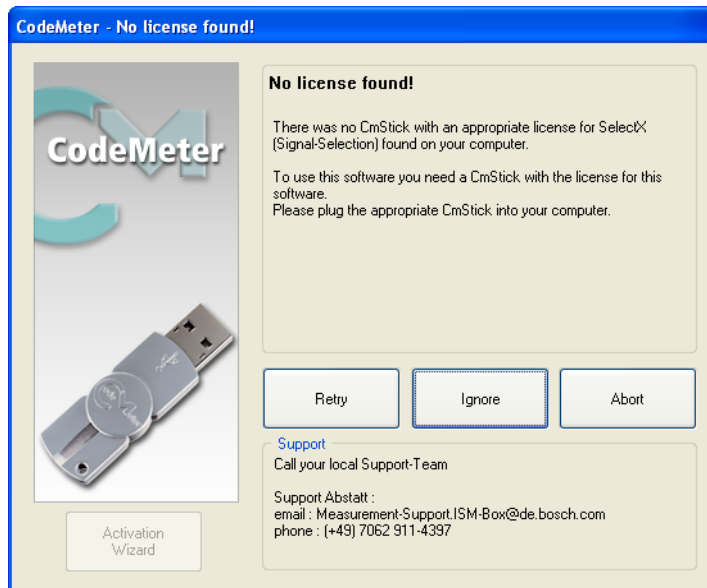
**>> Starting a program without valid license <<**



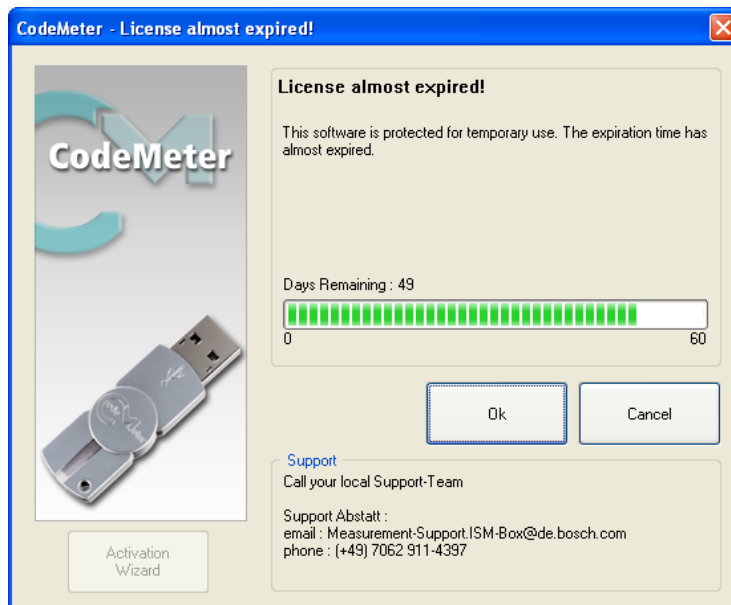
Retry: search for valid license once again

Cancel: close the program

On Bosch computers there will be a hint shown about the internal licensing.

**>> Lost license - program is already started (e.g. dongle is removed) <<**

- Retry: Search for valid license once again
- Ignore: Work with program without valid license for closing the program by your own.  
After third time this button is no longer shown.
- Abort: Close the program immediately (not saved data will be lost)

**>> Message about expiring license <<**

This dialog is shown for information that your license will be expired.  
It is shown 60, 45, 30, 20, 15, 10 days before License Expiration.  
If the remaining days are less than 10 days, the dialog is shown by every start of a program

Activation-Wizard : not available yet !